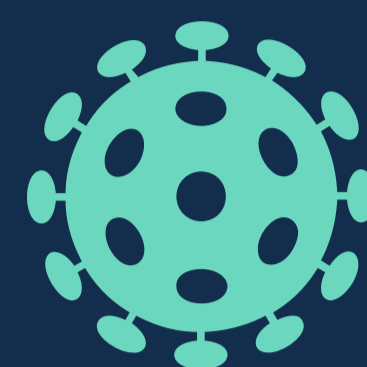
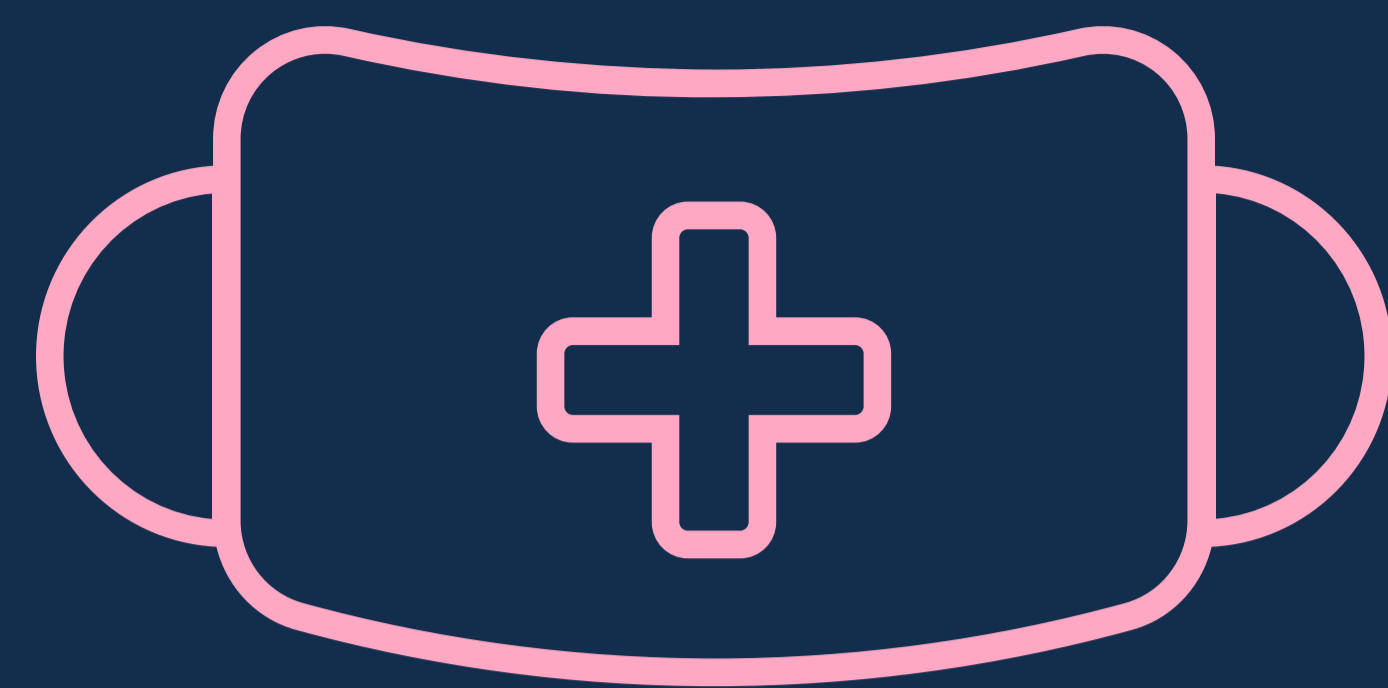
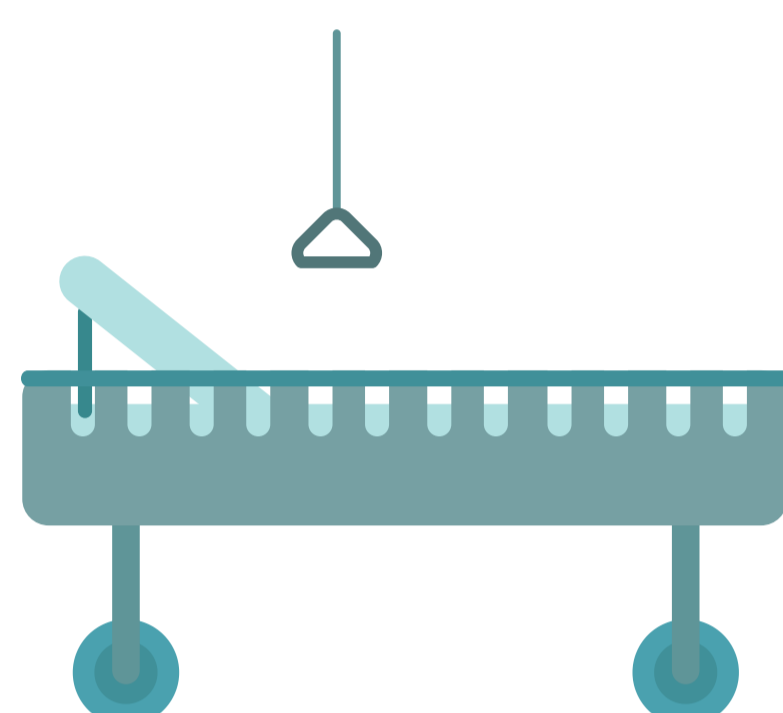


# PREVENTION OF COVID-19 SPREAD

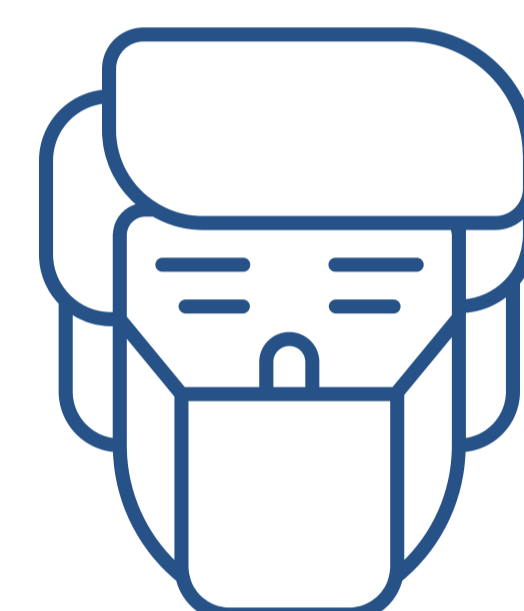
## Coronavirus (COVID-19)



Wash hands often with soap & water for 20 seconds or 60% hand sanitizer until dry.



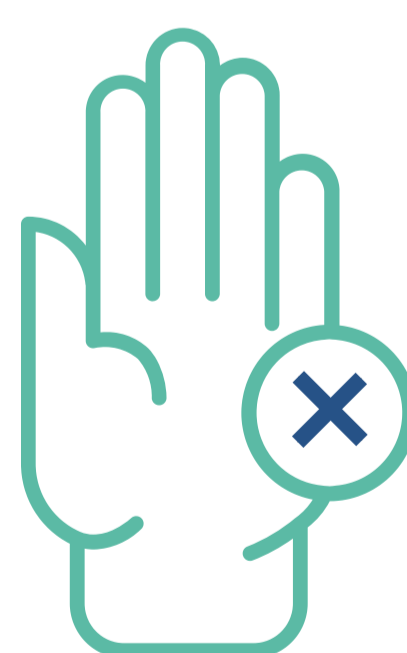
Initiate COVID-19 resuscitation per medical rules of engagement. To minimize aerosolization, use passive pre-oxygenation, avoid Bag Valve Mask use, maintain ventilator circuit, and clamp all endotracheal disconnects. Keep clamp at head of bed.



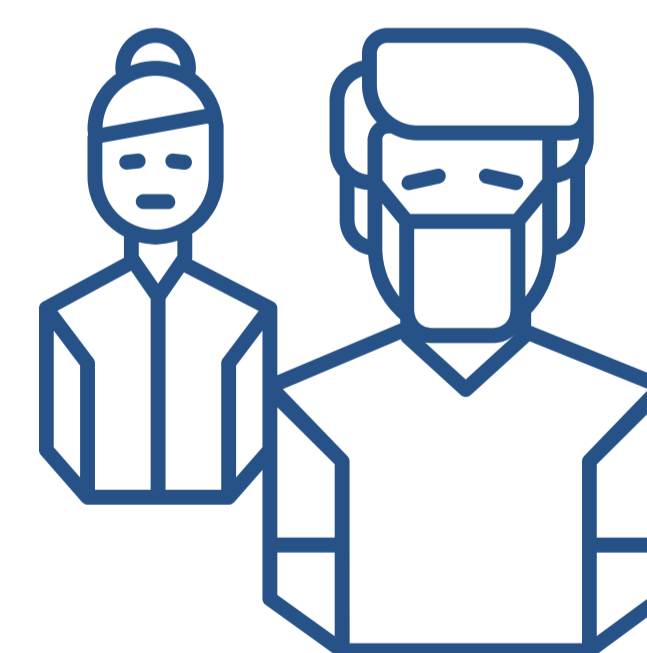
Screen and treat isolated patients by designated provider. Minimize support personnel. Perform invasive procedures at one time, with one PPE protected assistant.



Clean & disinfect nonporous, frequently touched surfaces. Bleach disinfection mixture: 5 tablespoons (1/3 cup) bleach/gallon water or 4 teaspoons bleach/quart water. **Note:** Mixture only effective up to 24 hours.



Implement and monitor unit and theater infection control & hazardous waste policies.



Maintain at least 6 feet distance. Avoid close contact and touching nose, face, eyes. Wear PPE according to exposure risk. Apply/remove PPE with observer to avoid contamination.



Visit [https://jts.amedd.army.mil/index.cfm/PI\\_CPGs/COVID-19](https://jts.amedd.army.mil/index.cfm/PI_CPGs/COVID-19) for full COVID-19 guidance for austere environments. Last updated June 2020.

